



Single Phase Hybrid Inverter (HV) (8/10) kW

Smarter Power Better Life



KEY FEATURES



50v

Low starting voltage

200%

Max. DC input oversizing

4MPPT

Max. 16A DC input

10kw

Max. charge/discharge power

14.5kw

Rated output power

4000m

Max. operating altitude



Single Phase Hybrid Inverter (HV) (8/10) kW

| Type Designation | SiH-8kW-SH | SiH-10kW-SH |
|--|--------------------------------|------------------|
| PV (input) | | |
| Max. recommended PV array power [Wp] | 16000 | 20000 |
| Max. PV input voltage* [V] | | 600 |
| Min. operating PV voltage [V] | | 40 |
| Start-up input voltage [V] | | 50 |
| Rated PV input voltage [V] | | 360 |
| MPPT voltage range [V] | | 40-560 |
| No. of MPPT/Strings per MPPT | | 4 (1/1/1/1) |
| Max. PV input current [A] | | 64 (16/16/16/16) |
| Max. DC short-circuit current [A] | | 80 (20/20/20/20) |
| Max. current for each input connector [A] | | 20 |
| Battery (input/output) | | |
| Battery type | LiFePO4 Prismatic Cell | |
| Battery voltage range [V] | 80-460 | |
| Max. charge/discharge current** [A] | 50/50 | |
| Max. charge/discharge power [W] | 10000/10000 | |
| Backup Output (On-Grid Mode) | | |
| Rated output power [W] | 14500 | |
| Rated output current [A] | 63 | |
| Backup Output (Off-Grid Mode) | | |
| Rated output power | 8000 W/8000 VA | 9999 W/9999 VA |
| Peak output power*** | 13680 VA, 10s | |
| Backup switching time [ms] | <10 | |
| Rated voltage [V] | 220/230/240 (±2 %) | |
| Frequency range [Hz] | 50/60 (±2 %) | |
| Total harmonic distortion (THDv, rated power, linear load) [%] | ≤2 | |
| Grid (input/output) | | |
| Max. AC input power from grid [VA] | 14500 | |
| Rated AC output power [W] | 8000 | 9999 |
| Max. AC output power [VA] | 8000 | 9999 |
| Max. AC output current [A] | 36.4 | 45.5 |
| Rated AC voltage [V] | 220/230/240 | |
| AC voltage range [V] | 154-276 | |
| Rated grid frequency [Hz] | 50/60 | |
| Grid frequency range [Hz] | 45-55/55-65 | |
| Total harmonic distortion (THDi) [%] | <3 | |
| Power factor at rated power | >0.99 | |
| Adjustable power factor | adj.0.8.leading to 0.8 lagging | |
| Efficiency | | |
| Max. efficiency/European efficiency [%] | 97.40/96.80 | 97.50/97.10 |
| Protection & Function | | |
| Surge protection | DC type II / AC type II | |
| Grid monitoring | Yes | |
| DC reverse polarity protection | Yes | |
| Battery input reverse polarity protection | Yes | |
| AC short-circuit protection | Yes | |
| Leakage current protection | Yes | |
| DC switch (PV) | Yes | |
| DC fuse (Battery) | Yes | |
| General Data | | |
| Topology (PV/Battery) | Transformerless | |
| Degree of protection | IP65 | |
| Dimensions (W*H*D) [mm] | 599*490*177 | |
| Weight [kg] | ≤29 | |
| Mounting method | Wall-mounting bracket | |
| Operating ambient temperature range [°C] | -25-60 | |
| Allowable relative humidity range [%] | 0-100 | |
| Cooling method | Natural convection | |
| Max. operating altitude [m] | 4000 | |
| Display | LED | |
| Communication | RS485/CAN/WLAN | |
| DI/DO | 1*DI / 2*DO/ DRM | |
| DC connection type | MC4 | |
| Battery connection type | MC4 | |
| AC connection type | Screws & Fasteners | |

* Input voltage exceeding the MPPT operating voltage range triggers inverter protection

** Depending on the connected battery

*** Can be reached only if PV and battery power is sufficient

Full Range From Power Generation,
Transmission, Distribution To

Energy Storage

32 years

With 32 years of experience,
specialized in equipment manufacturing
and engineering services

Public Co.

Founded in 1993
Stock listed in 2004 (SZSE002028)

US\$3.2 Billion

2024 Turnover

1400+

1411 Qualified engineers are
the driving force behind the
exceptional R&D progress

TOP 3

Sieyuan思源电气
Electrical Equip. Manufacturer

22

22 Manufacturing bases

100+

With 10,000+ employees
in 100+ countries and regions

1,000kV

Full range product: 10kV -1,000kV

esGrid

Grid-level energy storage

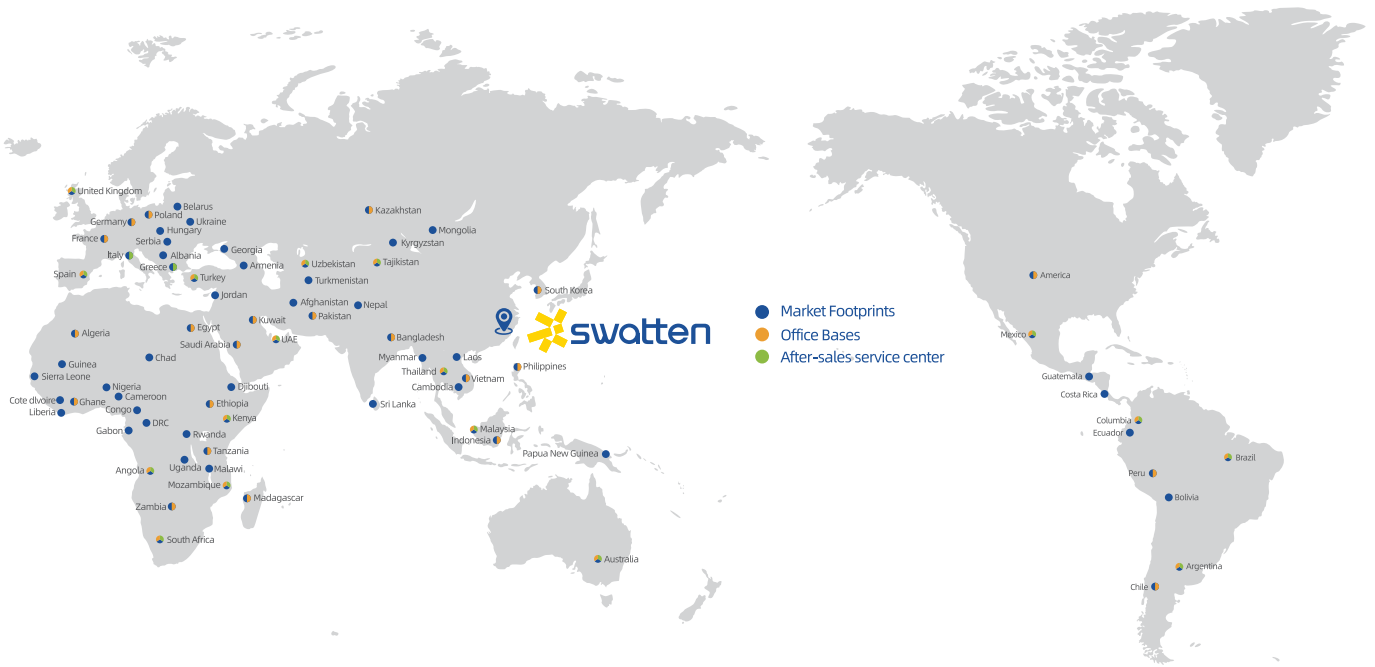
Sieyuan Utility Scale BESS

 swatten
Powered by Sieyuan

C&I and Residential BESS



Global Marketing & Service Layout



Our Global Clients

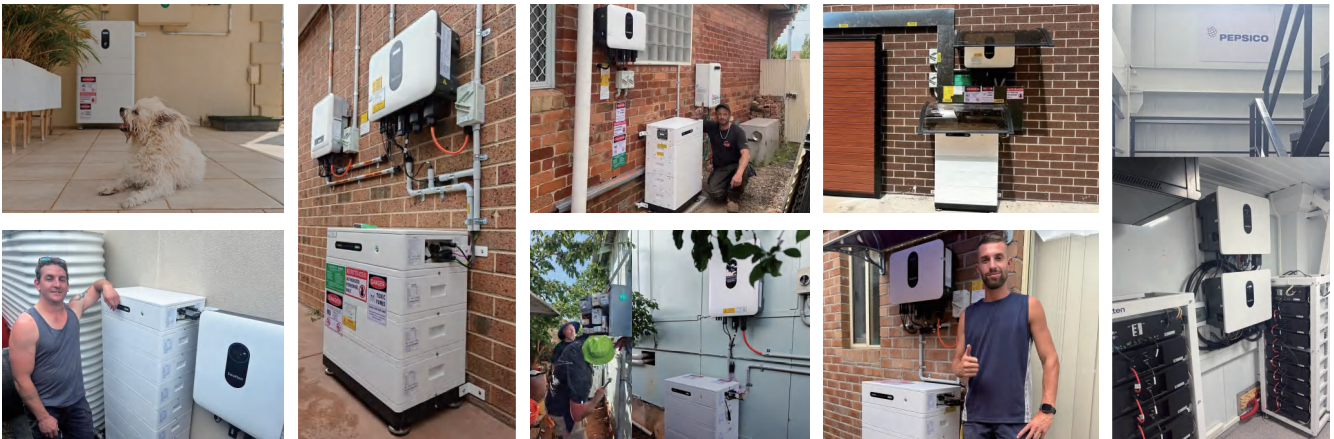




Swatten Europe Case



Swatten APAC Case



Compatible Battery Brand

* For detailed list please contact our technical team



Facebook



Linkedin



YouTube

FOLLOW US!

