



C&I BESS (HV) (20.4-71.6) kWh

Smarter Power Better Life

KEY FEATURES



Leading edge technology

- The secondary architecture BMS adopts advanced AI algorithms.
- Equipped with Wi-Fi for remote OTA updates (optional).
- Active cooling for 0.5C charge/discharge + 100% DOD + positive balancing ensures long-term battery use.

Flexible configuration System

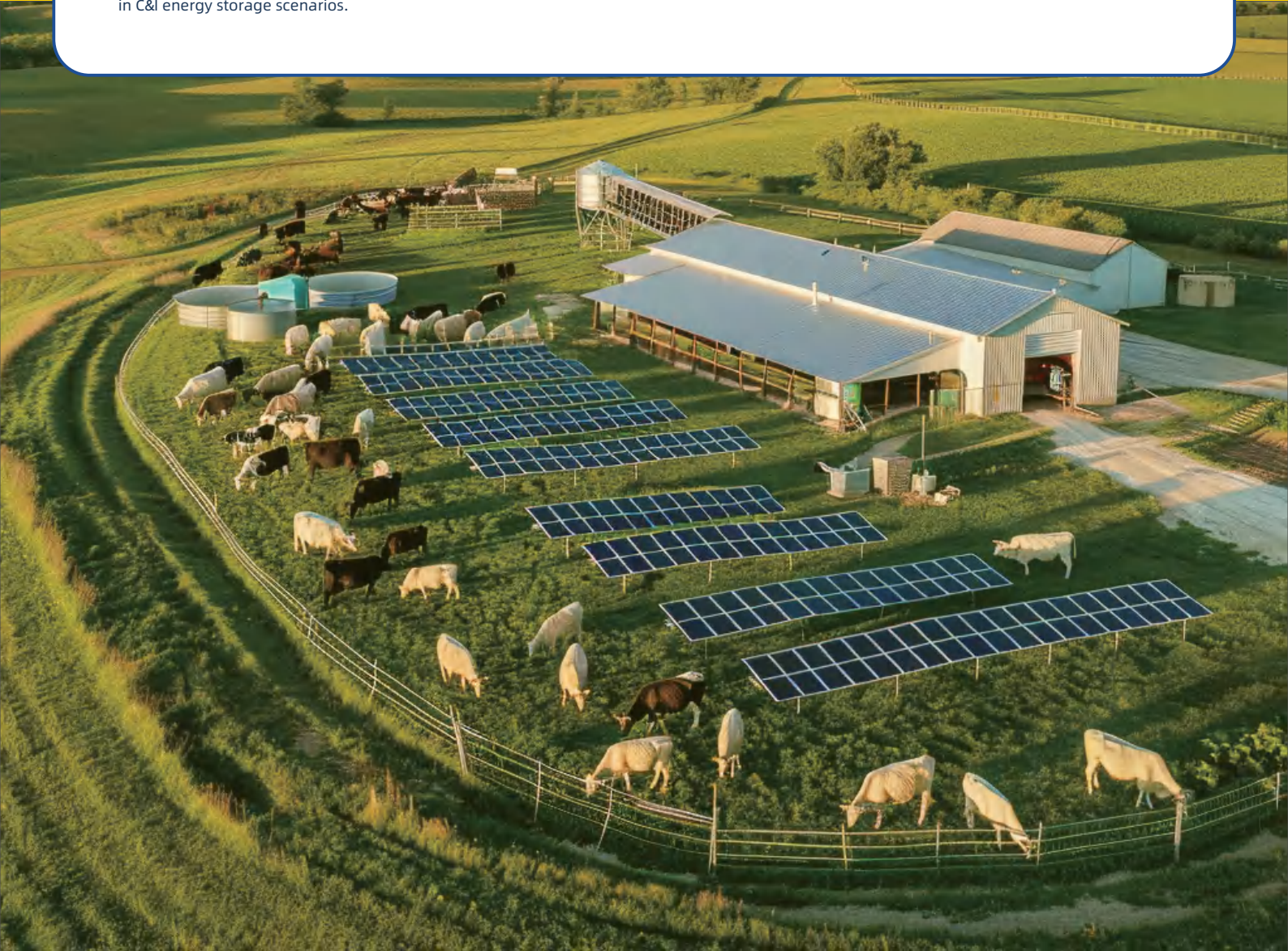
- PACK can be used up to 7 in series to reach 70kWh.
- Maximum 4 RACKs in parallel to increase capacity to 280kWh without adding other equipment .
- Industrial-Grade BMS protection & voltage level auto-matching allows free combination of series/parallel connections.
- 8000 cycles of design life to increase the return on investment in C&I energy storage scenarios.

Local Service Support

- Provides support from the design until the operation.
- Pre-sales and sales activities including online & offline product training.
- Logistics including warehousing and delivery to the installation site .
- Provide customers with localized and fast technical support for installation, commissioning and operation (including warranty services).

Safe and efficient

- Modular batteries + modular armored cabinets, with a minimalist design and LEGO-like installation method to save transportation costs.
- Pack-level fire protection (thermal aerosol) + rack-level fire protection (flexible suppression fire extinguishing system using perfluorohexane).
- Quick-connect + adaptive communication for foolproof installation.
- Packs/racks are designed to meet IP65 & C5 corrosion resistance standards.



C&I BESS (HV) (20.4-71.6) kWh

Model	SieB-XH20K4-M	SieB-XH30K7-M	SieB-XH40K9-M	SieB-XH51K2-M	SieB-XH61K4-M	SieB-XH71K6-M
-------	---------------	---------------	---------------	---------------	---------------	---------------

HV BOX						
Model	SieB-XH-M					
Communication Method	CAN/RS485/WiFi					
Humidity	0-95%RH (No condensed water)					
Altitude [m]	≤3500					
Rated Voltage	1000V DC					
Rated Current [A]	100 (Charge & Discharge Rate of 1C)					
Dimensions (W*H*D) [mm]	442*450*133					

Rack Batteries						
Battery Type	LiFePO4					
Module Type	SieB-XH10K2-M					
Capacity [kWh]	20.48	30.72	40.96	51.20	61.44	71.68
Battery Voltage (PACK 102.4V) [V]	204.8	307.2	409.6	512.0	614.4	716.8
Capacity [Ah]	100					

Electrical Parameters						
Voltage Range [V]	173-230	259-346	346-461	432-576	518-691	605-800
Max. Charging Current [A]	100					
Max. Discharge Current [A]	100					

General Data						
Dimensions (W*H*D) [mm]	576*582*804	576*582*1034	576*582*1264	576*582*1494	576*582*1724	576*582*1954
Communication Method	CAN/RS485					
Charging Temperature Range [°C]	0~45					
Discharging Temperature Range [°C]	-15~45					
Humidity	0-95%RH (No condensed water)					
Altitude [m]	≤3500					
Installation Method	Racks/Cabinet					
Degree of protection	IP65					
Warranty & Cycle Life	8000 Cycles (@25±2°C, 0.5C/0.5C, 80%DOD)					
Safety Certificate	UN/ CE					