



Rack Mounting BESS (HV) (9.8-26.2) kWh

Smarter Power Better Life



KEY FEATURES



94.9%

Usable energy efficiency

No

Built-in DCDC

104.8kWh

Max. capacity with 4 racks

20.16kW

Max. continuous power

CATL

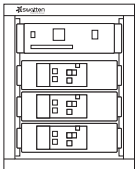
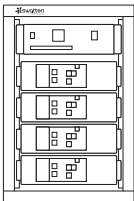
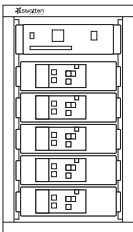
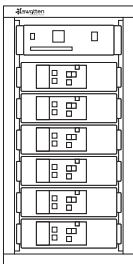
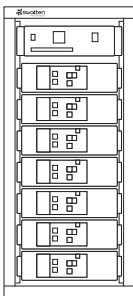
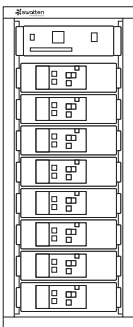
Pouch cell

10Years

Warranty with 1000-hour
salt spray test



Rack Mounting BESS (HV) (9.8-26.2) kWh

Type Designation	SieB-H9800-M	SieB-H13K1-M	SieB-H16K3-M	SieB-H19K6-M	SieB-H22K9-M	SieB-H26K2-M
Technical data						
Usable energy* [kWh]	9.83	13.11	16.38	19.66	22.94	26.21
Depth of discharge	Max.100% DOD (settable)					
Module type	SieB-H3277-M					
Module parameter	51.2V 64Ah 440*380*131mm 27kg					
Cell type	LFP (LiFePO4)					
Max. module configuration						
Cell configuration	1P48S	1P64S	1P80S	1P96S	1P112S	1P128S
Nominal voltage [V]	153.6	204.8	256	307.2	358.4	409.6
Operating voltage range [V]	144-172.8	192-230.4	240-288	288-345.6	336-403.2	384-460.8
Max. continuous current** [A]	52.5					
Max. continuous power** [kW]	7.56	10.08	12.60	15.12	17.64	20.16
Communication	CAN / RS485					
Parallel connect	A maximum of 4 racks with RS485 communication					
Weight [kg]	105	135	165	190	220	250
Dimensions (W*D*H) [mm]	600*600*634	600*600*768	600*600*897	600*600*1036	600*600*1170	600*600*1303
Operating temperature [°C]	-10-50					
Storage temperature [°C]	-30-60 (≤7 Days) / -20-45 (≤6 Months)					
Humidity [%]	5-95					
Altitude** [m]	≤2000					
Degree of protection	IP20 (Indoor)					
Cooling	Natural convection					
Installation location	Floor-standing (In Cabinet)					
Display	SOC indicator, Status indicator					
Warranty***	10 Years					

* Test conditions: 2.5V-3.6V, 0.2C Charge (CC-CV) and Discharge at 25±3°C, 100% depth of discharge (DOD);

** Max. Continuous Current / Power derating will occur related to Temperature / SOC / Humidity;

*** Refer to Swatten SieB-H-M Limited Warranty Letter;

Full Range From Power Generation,
Transmission, Distribution To

Energy Storage

32 years

With 32 years of experience,
specialized in equipment manufacturing
and engineering services

Public Co.

Founded in 1993
Stock listed in 2004 (SZSE002028)

US\$3.2 Billion

2024 Turnover

1400+

1411 Qualified engineers are
the driving force behind the
exceptional R&D progress

TOP 3

Sieyuan思源电气
Electrical Equip. Manufacturer

22

22 Manufacturing bases

100+

With 10,000+ employees
in 100+ countries and regions

1,000kV

Full range product: 10kV -1,000kV

esGrid

Grid-level energy storage

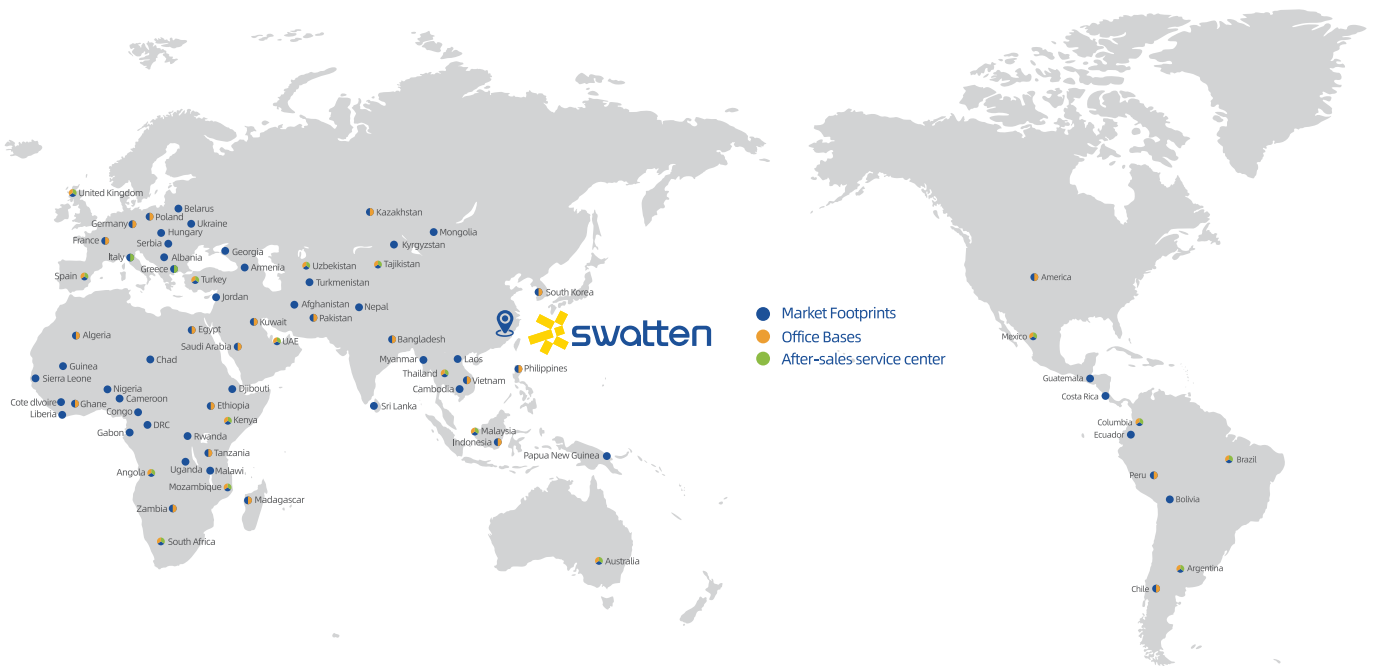
Sieyuan Utility Scale BESS

 swatten
Powered by Sieyuan

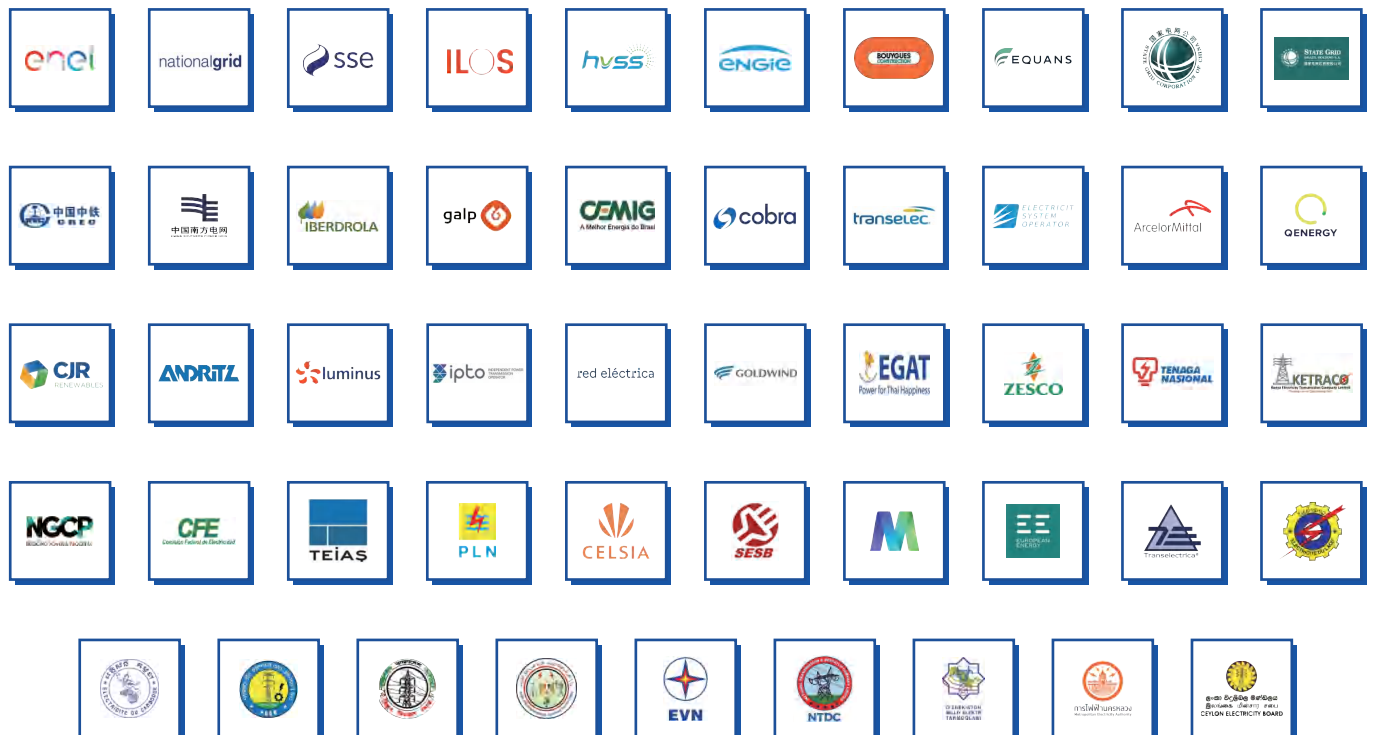
C&I and Residential BESS



Global Marketing & Service Layout

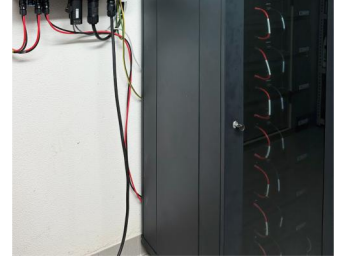
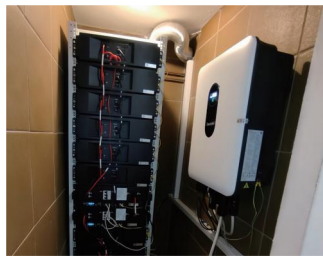


Our Global Clients

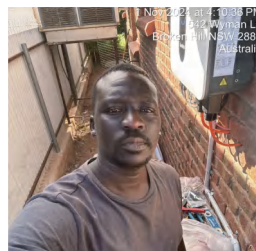
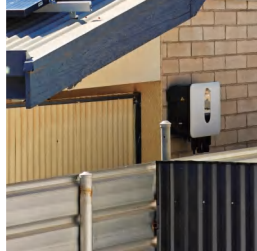




Swatten Europe Case



Swatten APAC Case



Facebook



Linkedin



YouTube

FOLLOW
US!

