



## **Rack Mounting BESS (LV) 5.12 kWh**

**Smarter Power Better Life**



# KEY FEATURES



## 100A

Max. continuous current

## OTA

Real-time monitoring & remote upgrades

## Easy

No 12V starter cable needed

## 15Modules

Supports up to 76.8kWh with parallel Modules

## 10Years

Warranty with 1000-hour salt spray test





# Rack Mounting BESS (LV) 5.12kWh

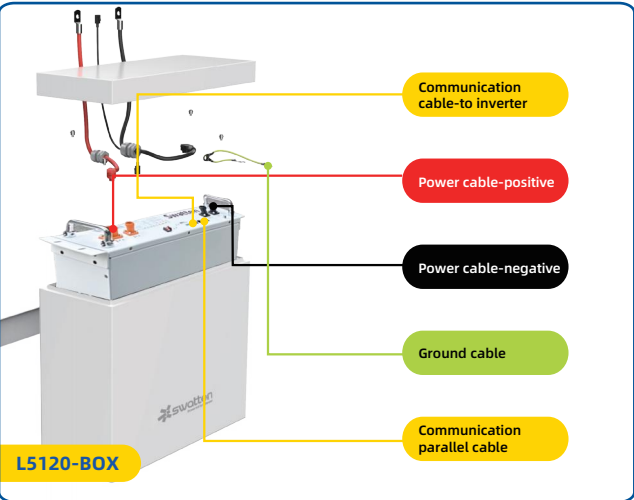
Type Designation	SieB-L5120-M	
Technical data		
Usable energy* [kWh]	5.12	
Depth of discharge	Max.100% DOD (settable)	
Cell type	LFP (LiFePO4)	
Cell nominal capacity [Ah]	100	
Cell configuration	1P16S	
Nominal voltage [V]	51.2	
Operating voltage range [V]	44.8-56	
Max. continuous current** [A]	50 (1 module)	100 (≥ 2 modules in parallel)
Max. continuous power** [kW]	2.4 (1 module)	4.8 (≥ 2 modules in parallel)
Communication	CAN	RS485
Parallel connect	A maximum of 15 Packs with RS485 communication	
Weight [kg]	42	
Dimensions (W*D*H) [mm]	446*500*131	
Operating temperature [°C]	Charge: 4-55/Discharge: -20-55	
Storage temperature [°C]	-20-45 (≤1 Month) / 0-35 (≤1 Year)	
Humidity [%]	0~95	
Altitude** [m]	≤3000	
Degree of protection	IP20 (Indoor)/IP54 (In Box)	
Cooling	Natural convection	
Installation location	Floor-standing (In Cabinet)	
Display	SOC indicator, Status indicator	
Warranty***	10 Years	

\* Test conditions: 2.5V-3.65V, 0.2C Charge (CC-CV) and Discharge at 25±3°C, 100% depth of discharge (DOD);

\*\* Max. Continuous Current/Power derating will occur related to Temperature / SOC / Humidity;

\*\*\* Refer to Swatten SieB-L-M Limited Warranty Letter;

## OUTDOOR APPLICATION SCENARIOS



\* The box (L5120-BOX) needs to be purchased separately.

### Features And Advantages

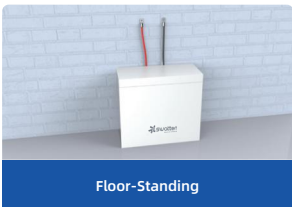
#### Perfect adaptation.

- High Protection Level, IP54 protection allows both indoor & outdoor use.
- Can be floor-standing or wall-mounted to satisfy different installation requirements.

#### Easy Installation

- Preset power cables and auto magnetic gearing design make labor work easier.
- No need to connect a 12V starter cable,Capable of Self-starting.

### Box Installation



Full Range From Power Generation,  
Transmission, Distribution To

## Energy Storage

**32 years**

With 32 years of experience,  
specialized in equipment manufacturing  
and engineering services

**Public Co.**

Founded in 1993  
Stock listed in 2004 (SZSE002028)

**US\$3.2 Billion**

2024 Turnover

**1400+**

1411 Qualified engineers are  
the driving force behind the  
exceptional R&D progress

**TOP 3**

**Sieyuan**思源电气  
Electrical Equip. Manufacturer

**22**

22 Manufacturing bases

**100+**

With 10,000+ employees  
in 100+ countries and regions

**1,000kV**

Full range product: 10kV -1,000kV

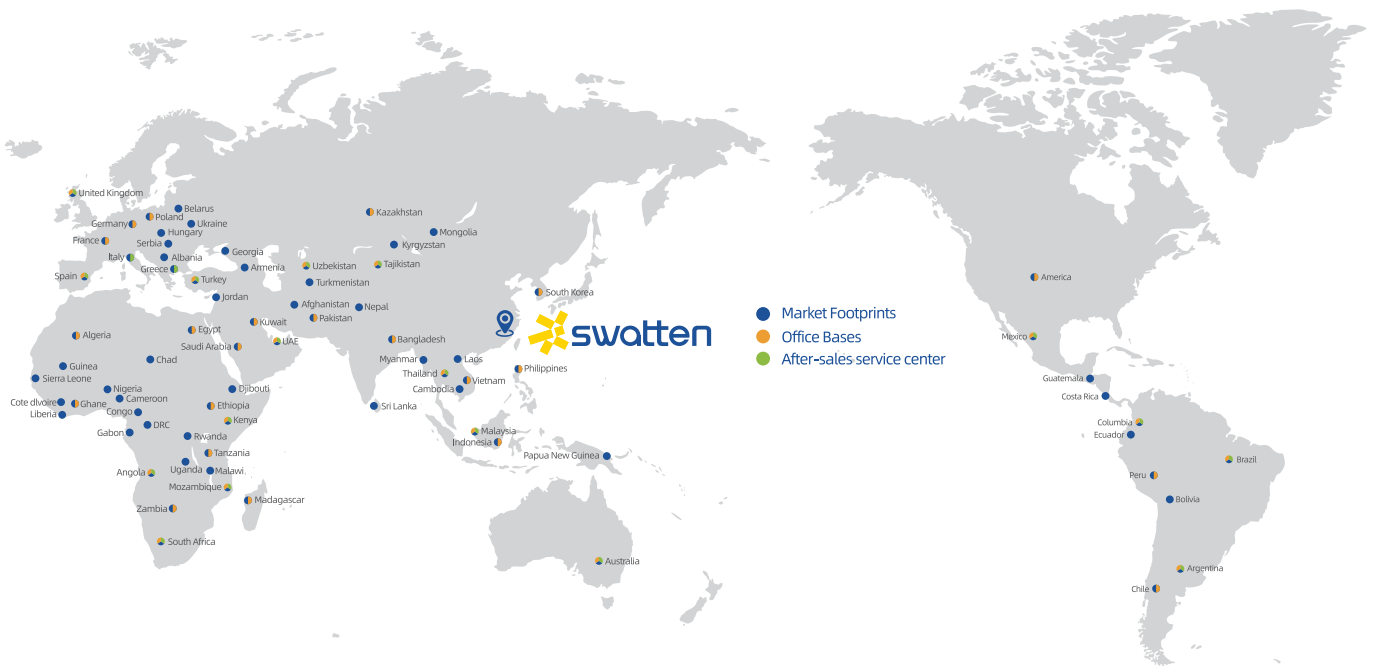
**esGrid**

Grid-level energy storage

Sieyuan Utility Scale BESS

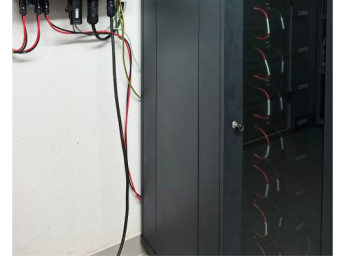
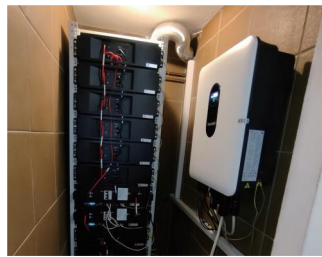
 **swatten**  
Powered by Sieyuan

C&I and Residential BESS

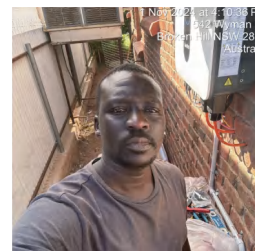
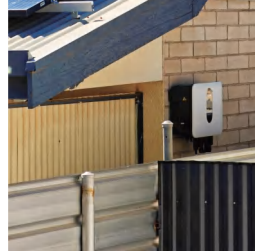




## Swatten Europe Case



## Swatten APAC Case



Facebook



Linkedin



YouTube

FOLLOW  
US!

