



# **Stackable BESS (HV) (9.6-25.6) kWh**

**Smarter Power Better Life**



# KEY FEATURES



## IP65

High protection level for indoor & outdoor

## Easy

Quick installation with stackable modules

## 35kg

Lightweight modules per unit

## 10Years

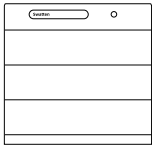
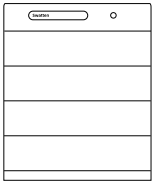
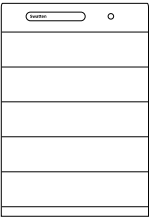
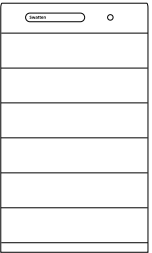


Warranty with 1000-hour salt spray test

## OTA

Real-time monitoring & remote upgrades



# Stackable BESS (HV) (9.6-25.6) kWh

Type Designation	SieB-H9600-F	SieB-H12K8-F	SieB-H16K0-F	SieB-H19K2-F	SieB-H22K4-F	SieB-H25K6-F
Technical data						
Usable energy* [kWh]	9.60	12.80	16.00	19.20	22.40	25.60
Depth of discharge	Max.100% DOD (settable)					
Module type	SieB-H3200-F					
Module parameter	64V 50Ah 615*360*165mm 33.3±0.5kg					
Cell type	LFP (LiFePO4)					
Max. module configuration	3	4	5	6	7	8
						
Cell configuration	1P60S	1P80S	1P100S	1P120S	1P140S	1P160S
Nominal voltage [V]	192	256	320	384	448	512
Operating voltage range [V]	171-216	228-288	285-360	342-432	399-504	456-576
Max. continuous current** [A]	30					
Max. continuous power** [kW]	5.76	7.68	9.60	11.52	13.44	15.36
Communication	CAN / RS485					
Weight [kg]	120	155	190	225	260	295
Dimensions (W*D*H) [mm]	615*360*730	615*360*880	615*360*1030	615*360*1180	615*360*1330	615*360*1480
Operating temperature [°C]	Charge: 0-50 / Discharge: -20-50					
Storage temperature [°C]	-20-45 (≤1Month) / -20-25 (≤6 Months)					
Humidity [%]	5-95					
Altitude [m]	≤2000					
Degree of protection	IP65 (Indoor / Outdoor)					
Cooling	Natural convection					
Installation location	Floor-standing					
Display	SOC indicator, Status indicator					
Warranty***	10 Years					

\* Test conditions: 3.0V-3.5V, 0.2C Charge (CC-CV) and discharge at 25±3°C, 100% depth of discharge (DOD);

\*\* Max. Continuous Current/Power derating will occur related to temperature / SOC / Humidity;

\*\*\* Refer to Swatten SieB-H-F Limited Warranty Letter;



Full Range From Power Generation,  
Transmission, Distribution To

## Energy Storage

### 30 years

With 30+ years of experience,  
specialized in equipment manufacturing  
and engineering services

### Public Co.

Founded in 1993  
Stock listed in 2004 (SZSE002028)

### US\$3.2 Billion

2024 Turnover

### 1400+

1411 Qualified engineers are  
the driving force behind the  
exceptional R&D progress

### TOP 3

**Sieyuan**思源电气  
Electrical Equip. Manufacturer

### 22

22 Manufacturing bases

### 60+

With 10,000+ employees  
in 60+ countries and regions

### 1,000kV

Full range product: 10kV -1,000kV

## esGrid

Grid-level energy storage

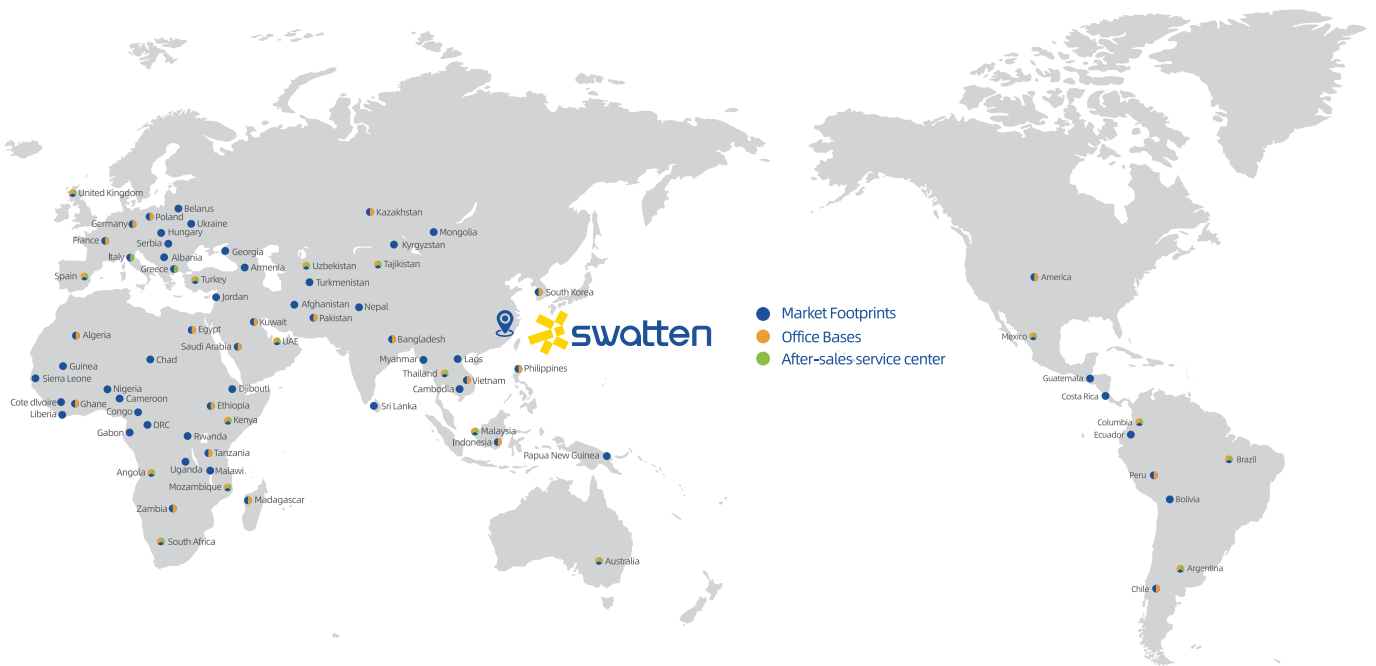
Sieyuan Utility Scale BESS



C&I and Residential BESS



## Global Marketing & Service Layout

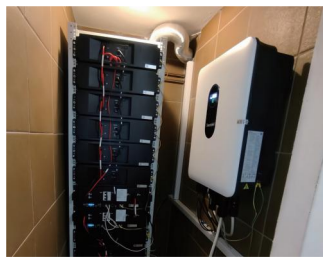


## Our Global Clients

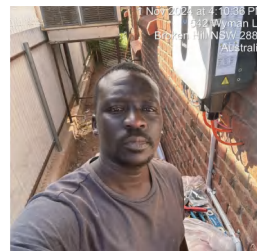
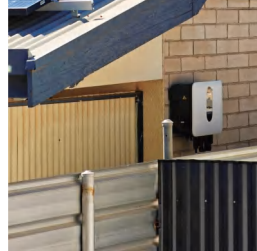




## Swatten Europe Case



## Swatten APAC Case



Facebook



Linkedin



YouTube

FOLLOW  
US!

