



Rack Mounting BESS (HV) (9.8-26.2) kWh

Smarter Power Better Life



KEY FEATURES



94.9%

Usable energy efficiency

No

Built-in DCDC

104.8kWh

Max. capacity with 4 racks

20.16kW

Max. continuous power

CATL

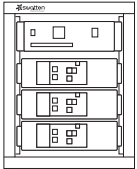
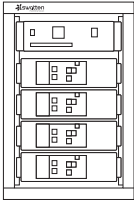
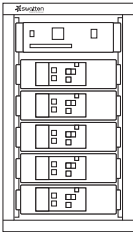
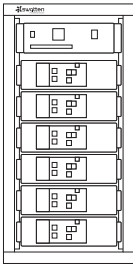
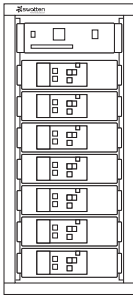
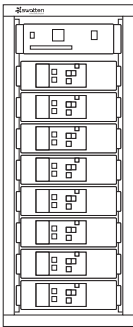
Pouch cell

10Years

Warranty with 1000-hour
salt spray test



Rack Mounting BESS (HV) (9.8-26.2) kWh

Type Designation	SieB-H9800-M	SieB-H13K1-M	SieB-H16K3-M	SieB-H19K6-M	SieB-H22K9-M	SieB-H26K2-M
Technical data						
Usable energy* [kWh]	9.83	13.11	16.38	19.66	22.94	26.21
Depth of discharge	Max.100% DOD (settable)					
Module type	SieB-H3277-M					
Module parameter	51.2V 64Ah 440*380*131mm 27kg					
Cell type	LFP (LiFePO4)					
Max. module configuration						
Cell configuration	1P48S	1P64S	1P80S	1P96S	1P112S	1P128S
Nominal voltage [V]	153.6	204.8	256	307.2	358.4	409.6
Operating voltage range [V]	144-172.8	192-230.4	240-288	288-345.6	336-403.2	384-460.8
Max. continuous current** [A]	52.5					
Max. continuous power** [kW]	7.56	10.08	12.60	15.12	17.64	20.16
Communication	CAN / RS485					
Parallel connect	A maximum of 4 racks with RS485 communication					
Weight [kg]	105	135	165	190	220	250
Dimensions (W*D*H) [mm]	600*600*634	600*600*768	600*600*897	600*600*1036	600*600*1170	600*600*1303
Operating temperature [°C]	-10-50					
Storage temperature [°C]	-30-60 (≤7 Days) / -20-45 (≤6 Months)					
Humidity [%]	5-95					
Altitude** [m]	≤2000					
Degree of protection	IP20 (Indoor)					
Cooling	Natural convection					
Installation location	Floor-standing (In Cabinet)					
Display	SOC indicator, Status indicator					
Warranty***	10 Years					

* Test conditions: 2.5V-3.6V, 0.2C Charge (CC-CV) and Discharge at 25±3°C, 100% depth of discharge (DOD);

** Max. Continuous Current / Power derating will occur related to Temperature / SOC / Humidity;

*** Refer to Swatten SieB-H-M Limited Warranty Letter;

Full Range From Power Generation,
Transmission, Distribution To

Energy Storage

30 years

With 30+ years of experience,
specialized in equipment manufacturing
and engineering services

Public Co.

Founded in 1993
Stock listed in 2004 (SZSE002028)

US\$3.2 Billion

2024 Turnover

1400+

1411 Qualified engineers are
the driving force behind the
exceptional R&D progress

TOP 3

Sieyuan思源电气
Electrical Equip. Manufacturer

22

22 Manufacturing bases

60+

With 10,000+ employees
in 60+ countries and regions

1,000kV

Full range product: 10kV -1,000kV

esGrid

Grid-level energy storage

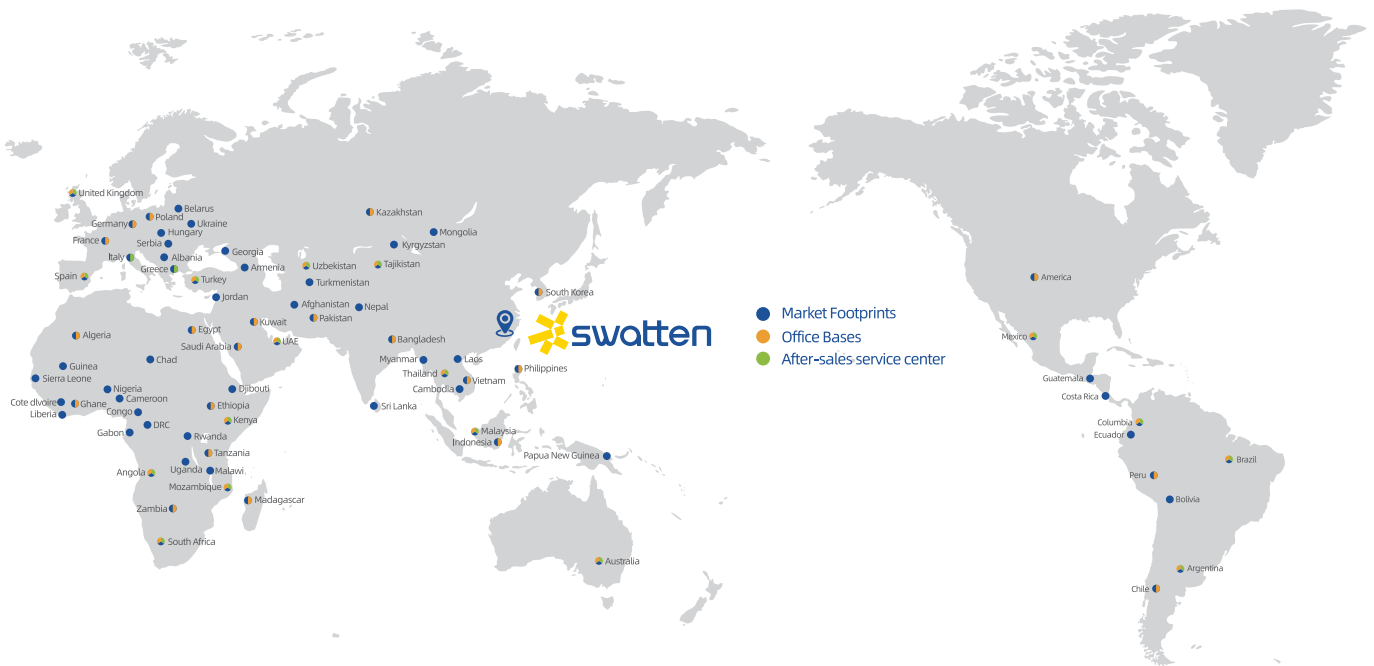
Sieyuan Utility Scale BESS

 **swatten**
Powered by Sieyuan

C&I and Residential BESS



Global Marketing & Service Layout

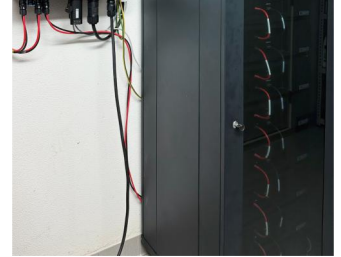
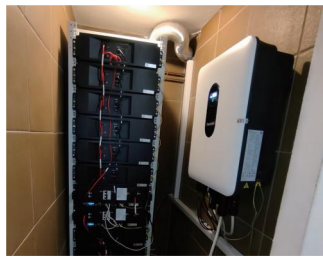


Our Global Clients

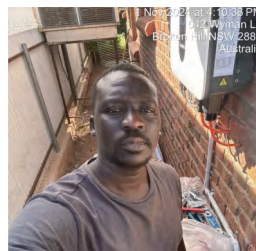
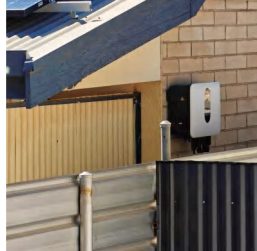




Swatten Europe Case



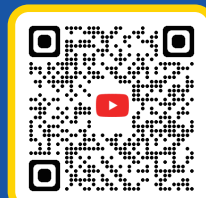
Swatten APAC Case



Facebook



Linkedin



YouTube

FOLLOW
US!

