



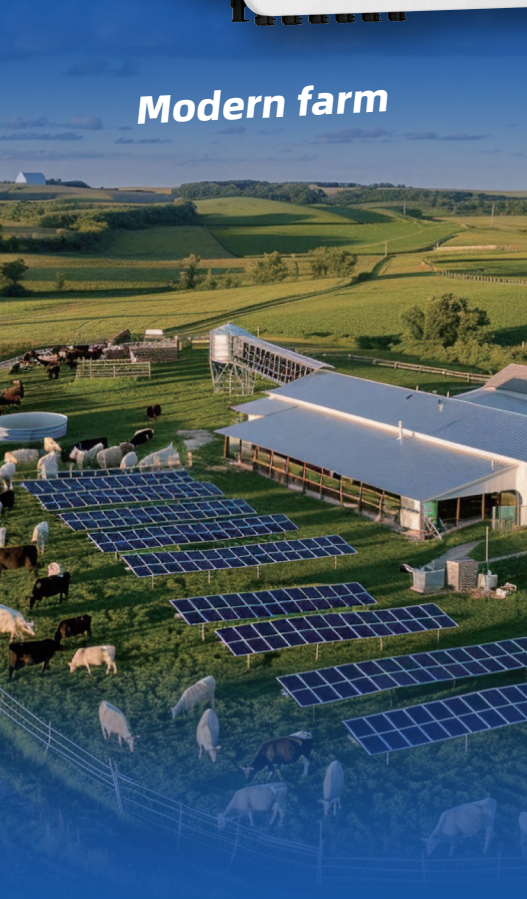
# Three Phase Hybrid Inverter (HV) (10-50) kW

**Smarter Power Better Life**



# Three Phase Hybrid Inverter **10-50kW**

**Modern farm**



**Rural school**



**Community hospital**



**More Powerful** **200%**

Oversizing PV system

PV input power up to 60kW

**More Reliable** **55kW**

Max. output power for backup load during On-Grid mode

**Supports** **30** pcs

Supports 30 pcs in parallel with Master-Slave control, delivering up to 1500kW

**More Flexible** **6 PV Strings**

Divide the solar panels into up to six zones

Adapts to complex installation scenarios

**More Extensive** **100%**

Ensures all the energy supplied is green energy

Support fast Ac chargers and SG-ready heat pumps

**More Intelligent** **10ms**

Switching time with whole home backup

100% EPS output power (off grid mode)

# Three Phase Hybrid Inverter (HV) (10-20) kW

Type Designation	SiH-10kW-TH-PRO		SiH-15kW-TH	SiH-20kW-TH
PV (input)				
Max. recommended PV array power [Wp]	20000		30000	40000
Max. PV input voltage [V]			1000	
Rated PV input voltage [V]			650	
Start-up input voltage [V]			150	
MPPT voltage range [V]			150-950	
No. of MPPT/Strings per MPPT	3 (2/1/1)			3 (2/2/1)
Max. PV input current [A]	64 (32/16/16)			80 (32/32/16)
Max. DC short-circuit current [A]	80 (40/20/20)			100 (40/40/20)
Battery (input/output)				
Battery type			Li-ion battery	
Battery voltage range [V]			100-800	
Max. charge/discharge current* [A]			50/50	
Max. charge/discharge power [W]	15000/10000		30000/15000	30000/20000
Grid (input/output)				
Max. AC power from grid			43000 W / 43000 VA	
Rated AC output power [VA]	10000		15000	20000
Max. AC output power [VA]	10000		15000	20000
Max. AC output current [A]	15.2		22.8	30.3
Rated voltage [V]	3 / N / PE, 220 / 380; 230 / 400; 240 / 415			
AC voltage range [V]	270-480			
Rated grid frequency [Hz]	50/60			
Grid frequency range [Hz]	45-55 / 55-65			
Total harmonic distortion (THDi, rated power) [%]	< 3			
Power factor at rated power / Adjustable power factor	> 0.99 / 0.8 leading to 0.8 lagging			
Backup (output)				
Rated voltage [V]	3 / N / PE, 220 ; 230 ; 240			
Frequency range [Hz]	50 / 60			
Total harmonic distortion (THDv, rated power, Linear load) [%]	≤2			
Backup switching time [ms]	< 10			
Rated output power (off-grid mode) [VA]	10000		15000	20000
Peak output power (off-grid mode)**	16800 W / 168000 VA, 10s		25500 W / 25500 VA, 10s	32000 W / 32000 VA, 10s
Max. output power (on-grid mode)	43000 W / 43000 VA			
Max. output current (on-grid mode) [A]	3*63			
Efficiency				
Max. efficiency/European efficiency [%]	98.00/97.50		98.10/97.60	
Protection & Function				
Parallel***	Master-slave mode			
Surge protection	Type II , DC and AC			
Overvoltage category	II DC and III AC			
Protective class	Class I			
Grid monitoring	Yes			
DC reverse polarity protection	Yes			
Battery input reverse polarity protection	Yes			
Insulation monitoring	Yes			
AC short-circuit protection	Yes			
Residual current protection	Yes			
DC switch (PV)	Yes			
Over-heat protection	Yes			
AFCI	OPT			
General Data				
Topology (PV/battery)	Transformerless			
Degree of protection	IP66			
Dimensions (W*H*D) [mm]	615 * 465 * 255			
Weight [kg]	35		36.5	
Mounting method	Wall-mounting bracket			
Operating ambient temperature range [°C]	-25-60 (Derating above 45)			
Allowable relative humidity range (Non-condensing) [%]	0-100			
Cooling method	Natural convection			
Noise (Typical)	35 dB (A)			
Max. operating altitude [m]	2000			
Display	LED			
Communication	2*RS485/2*CAN/WLAN			
DI/DO	4*DI/2*DO/DRM0			
DC connection type	MC4 (PV, Max. 6 mm²)			
Battery connection type	Plug and play connector ( Battery, Max.10mm² )			
AC connection type	OT Terminals (Grid / Backup, Max.26mm²)			

\* Depending on the connected battery

\*\* Can be reached only if PV and battery power is sufficient

\*\*\* Detail refer to inverters parallel configuration in User Manual



# Three Phase Hybrid Inverter (HV) (25-50) kW

Type Designation	SiH-25kW-TH		SiH-30kW-TH		SiH-40kW-TH		SiH-50kW-TH	
PV (input)								
Max. recommended PV array power [Wp]	50000		60000					
Max. PV input voltage [V]			1000					
Rated PV input voltage [V]			650					
Start-up input voltage [V]			150					
MPPT voltage range [V]			150-950					
No. of MPPT/Strings per MPPT			3 (2/2/2)					
Max. PV input current [A]			96 (32 / 32 / 32)					
Max. DC short-circuit current [A]			120 (40 / 40 / 40)					
Battery (input/output)								
Battery type	Li-ion battery							
Battery voltage range [V]	100-800							
Max. charge/discharge current* [A]			60/60				65/65	
Max. charge/discharge power [W]	30000 / 25000		30000 / 30000		40000 / 40000		50000 / 50000	
Grid (input/output)								
Max. AC power from grid	55000 W / 55000 VA							
Rated AC output power [VA]	25000		30000		40000		50000	
Max. AC output power [VA]	25000		30000		40000		50000	
Max. AC output current [A]	37.9		45.5		60.6		75.8	
Rated voltage [V]	3 / N / PE, 220 / 380; 230 / 400; 240 / 415							
AC voltage range [V]	270-480							
Rated grid frequency [Hz]	50/60							
Grid frequency range [Hz]	45-55 / 55-65							
Total harmonic distortion (THDi, rated power) [%]	< 3							
Power factor at rated power / Adjustable power factor	> 0.99 / 0.8 leading to 0.8 lagging							
Backup (output)								
Rated voltage [V]	3 / N / PE, 220 ; 230 ; 240							
Frequency range [Hz]	50 / 60							
Total harmonic distortion (THDv, rated power, Linear load) [%]	≤2							
Backup switching time [ms]	< 10							
Rated output power (off-grid mode) [VA]	25000		30000		40000		50000	
Peak output power (off-grid mode)**	36500 W / 36500 VA, 10s		45000 W / 45000 VA, 10s		60000 W / 60000 VA, 10s		70000 W / 70000 VA, 10s	
Max. output power (on-grid mode)	55000 W / 55000 VA							
Max. output current (on-grid mode) [A]	3*80							
Efficiency								
Max. efficiency/European efficiency [%]	98.20 / 97.80				98.20 / 97.90			
Protection & Function								
Parallel***	Master-slave mode							
Surge protection	Type II , DC and AC							
Overvoltage category	II DC and III AC							
Protective class	Class I							
Grid monitoring	Yes							
DC reverse polarity protection	Yes							
Battery input reverse polarity protection	Yes							
Insulation monitoring	Yes							
AC short-circuit protection	Yes							
Residual current protection	Yes							
DC switch (PV)	Yes							
Over-heat protection	Yes							
AFCI	OPT							
General Data								
Topology (PV/battery)	Transformerless							
Degree of protection	IP66							
Dimensions (W*H*D) [mm]	615 * 465 * 255							
Weight [kg]	38				39.5		39.8	
Mounting method	Wall-mounting bracket							
Operating ambient temperature range [°C]	-25-60 (Derating above 45)							
Allowable relative humidity range (Non-condensing) [%]	0-100							
Cooling method	Fan cooling							
Noise (Typical)	55 dB (A)				60 dB (A)			
Max. operating altitude [m]	2000							
Display	LED							
Communication	2*RS485/2*CAN/WLAN							
DI/DO	4*DI/2*DO/DRM0							
DC connection type	MC4 (PV, Max. 6 mm²)							
Battery connection type	Plug and play connector ( Battery, Max.10mm² )							
AC connection type	OT Terminals (Grid / Backup, Max.26mm²)							

\* Depending on the connected battery  
\*\* Can be reached only if PV and battery power is sufficient  
\*\*\* Detail refer to inverters parallel configuration in User Manual

Full Range From Power Generation,  
Transmission, Distribution To

## Energy Storage

### 30 years

With 30+ years of experience,  
specialized in equipment manufacturing  
and engineering services

### Public Co.

Founded in 1993  
Stock listed in 2004 (SZSE002028)

### US\$3.2 Billion

2024 Turnover

### 1400+

1411 Qualified engineers are  
the driving force behind the  
exceptional R&D progress

### TOP 3

**Sieyuan**思源电气  
Electrical Equip. Manufacturer

### 22

22 Manufacturing bases

### 60+

With 10,000+ employees  
in 60+ countries and regions

### 1,000kV

Full range product: 10kV -1,000kV

## esGrid

Grid-level energy storage

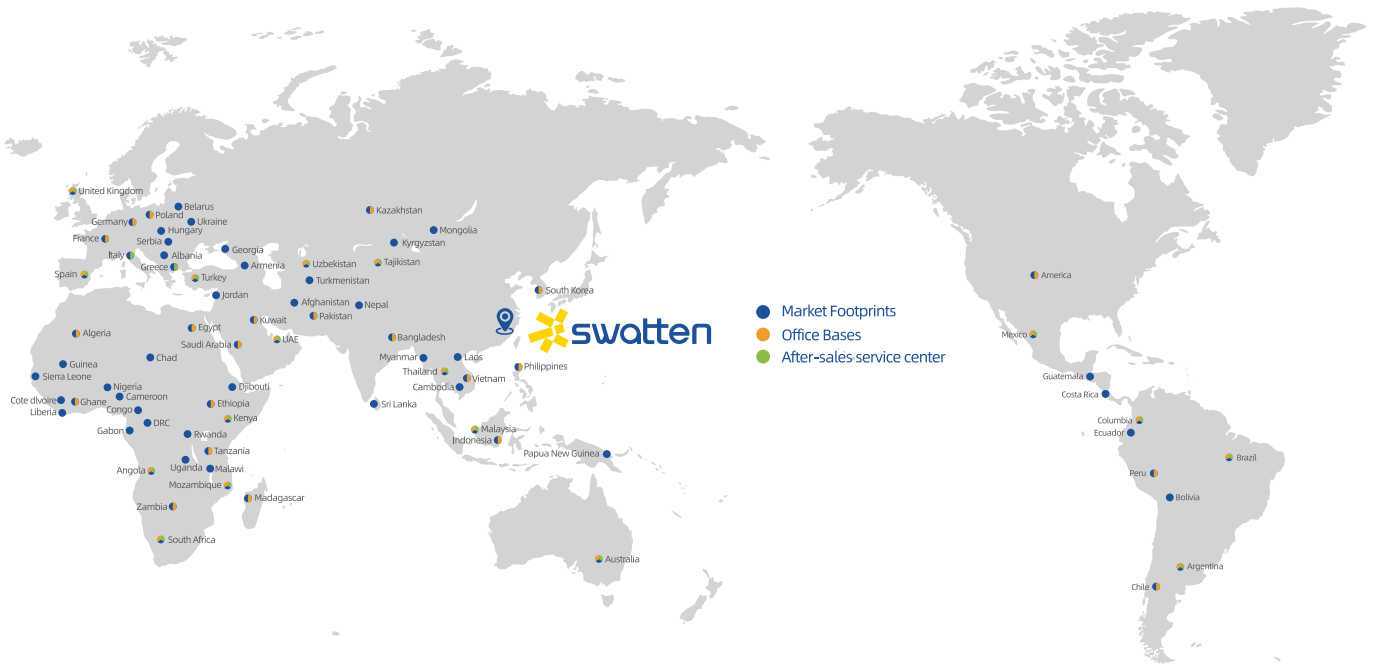
Sieyuan Utility Scale BESS



C&I and Residential BESS



## Global Marketing & Service Layout



## Our Global Clients

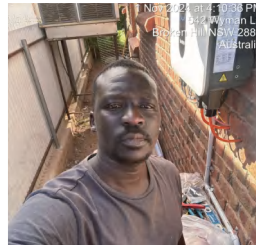




## Swatten Europe Case



## Swatten APAC Case



## Compatible Battery Brand

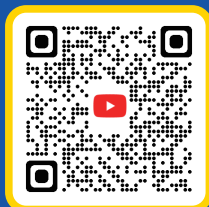
\* For detailed list please contact our technical team



Facebook



Linkedin



YouTube

FOLLOW  
US!

